

CARGO TRUCKS

URAL NEXT

URAL



URAL NEXT KS-55732



RELIABILITY

- Updated driveline with service life and reliability enhanced by 50%
- Pneumatic brake system with WABCO components
- High resistance to corrosion



CROSS-COUNTRY ABILITY

- Engine power up to 312 h.p.
- Differentials locking
- Central tire pressure control system



COMFORT

- New NEXT bonnet-type cab
- Air-sprung driver's seat
- Heat and noise insulation
- Optimal internal environment



GUARANTEE & SERVICE

- 24-month or 100,000 km guarantee
- 15,000 service-to-service interval



SAFETY

- Bonnet-type cab layout improving driver's safety
- RBL steering



COST EFFICIENCY

- Competitive price among similar vehicles
- Low cost of ownership

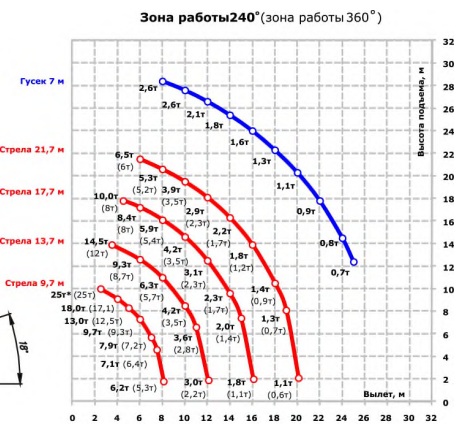
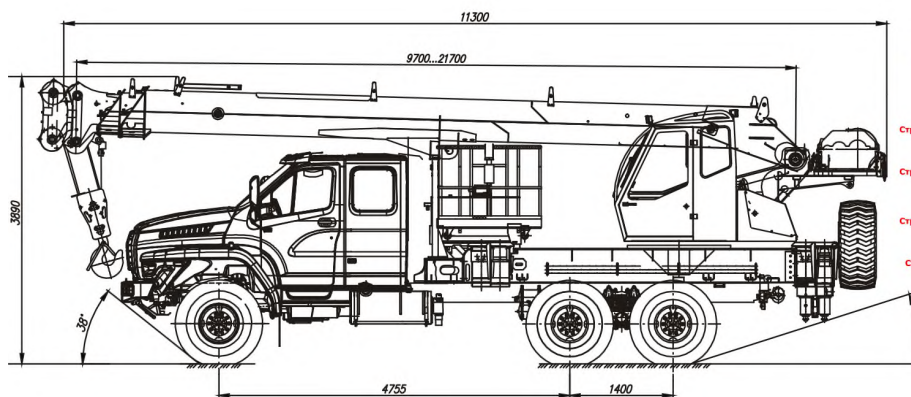
TECHNICAL DATA

KS-55732-21 CHELYABINETS CRANE TRUCK

The KS-55732 CHELYABINETS crane truck, a carrying capacity of 25 tons, is intended for construction and installation works, handling operations and post-emergency recovery jobs at geographically dispersed objects in all industrial branches. The crane is equipped with a two-seat bosun's chair for maintenance of buildings and structures, power-transmission and telecommunication lines, air ducts and other work that requires personnel lifting at a height up to 12m.*

The seven-seat cab allows organizing transportation of a working team to a working site and back without involvement of additional transport means.

Crane truck	KS-55732 CHELYABINETS
Chassis	URAL-4320-6982-74
Wheel arrangement	6 x 6
Gross vehicle weight (crane truck with main boom)	21 220
G.V.W. distribution, kg	
- on front axle	5 750
- on rear bogie	15 470
Engine	YAMZ-53602-10 in-line (Emission class-4) / YAMZ-53642.10 with ignition, in-line, emission class 4 (UN ECE Regulation no. 96-02)
Rated power, h.p.	312 / 285
Max. engine speed, min ⁻¹	2300
Max. torque, N·m	1226 / 115
Engine speed at max. torque, min ⁻¹	1300...1600
Gearbox	ZF9S1310TO / YAMZ-1105
Transfer box	Type-mechanical 9-speed / Mechanical, 5 speed "Automobile plant "URAL" JSC, 2-speed, with inter-axle differential (high gear - 1.04, low gear - 2.15)
Cab type	bonnet-type, seven seat
Brake system	drive Pneumatic
Driving axles	"Automobile pant "URAL" JSC, gear ratio: 7.49
Max. speed, km/h	60
Carrying capacity, kg	25 000
Load moment, t·m	80
Support contour, m	4.4 x 5.8
Turning radius, m	11.6
Max. boom outreach (with 7m jib), m	20.1 (25.0)
Lifting height on boom (with 7m jib), m	21.9 (28.4)
Boom length, m	9.7-21.7
Rated cargo lifting speed, m/min.	9.0-48.0
Lowering speed, m/min. (at k=6)	-0.3
Rotation speed, rpm	0,1-2,24
Overall dimensions (L x W x H)	11000 x 2500 x 37500



* A two-seat bosun's chair with lifting height up to 24.6 m can be mounted.

Exclusively Distributed by:



Cebu: 71 Juan Luna Ave. Kasambagan Mabolo, Cebu City • Telefax: 032.520.2214
 Manila: Parc House 1, Suite 33, 227 EDSA Greenhills, Mandaluyong City 1554 • Telefax: 02.576.8606
 Warehouse: Canaynay Avenue, BF Homes Martinville Subd., Manuyo Dos, Las Piñas, Manila
 Davao: Diversion Highway, Matina Pang, Talomo Davao City
 www.conequip-ph.com • info@conequip-ph.com